



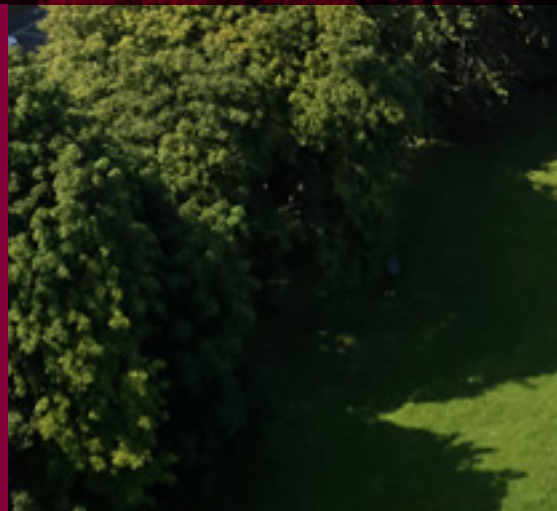
OLLSCOIL NA GAILLIMHÉ  
UNIVERSITY OF GALWAY

# *Mature Students Guide*



2023







# University of Galway

## Mature Students Guide 2023

The Mature Students Office is part of the Access Centre. The aim of the Access Centre is to create a supportive learning environment where students who have experienced socio-economic disadvantage, students with disabilities and mature students are enabled to access and succeed in third level education. This involves a wide range of educational approaches and specialist services that include Access Programmes, Disability Support Service, and the Traveller Education Officer, and are targeted at large numbers of students who are classified by the Higher Education Authority as 'non-traditional'.







# Come *and* meet with us

## Mature Public Information Evening

11 January 2023

### *University of Galway Open Days:*

*Friday 7th & Saturday 8th October 2022*

*Saturday, 25th March 2023*

#### **Meet the Mature Students Officer and learn about degrees, careers, SUSI Grants, Access Courses and CAO application.**

The Mature Students Officer will give a welcome presentation explaining the CAO application procedure and sharing some past students' experiences with you.

Representatives from all our College Degree Programmes will be there to answer questions about career opportunities and the learning outcomes of their individual programmes. The Career Development Service will be there to assist with questions on career prospects if you complete a degree.

All adult learners are welcome no matter what their age is as the university offers so much more than just full-time degrees. The Centre for Adult Learning and Professional Development will be present and offers short special interest courses, online courses, languages, classroom-based learning and professional development courses.

Many people attending the evening in the past have been directed into Access Foundation Diploma Courses to give them the Foundation Skills in academic subjects at a pre-university level 6 and supported onwards to degrees in all disciplines at University of Galway. These courses build confidence in self, and ability and support everyone to reach their full potential.

There is a place for everyone at University of Galway whether it is through an Access course, a full-time degree or through our Centre for Adult Learning and Professional Development Programmes. Full details will be available on our website in December.

Open Days Open Days are the perfect opportunity for you and your family to experience life at University of Galway. Visit us and immerse yourself in our vibrant and diverse community. Meet our world-leading academics, our current access students and see how they can inspire you.

#### **Find out more:**

[www.universityofgalway.ie/opendays](http://www.universityofgalway.ie/opendays)

[www.universityofgalway.ie/mature](http://www.universityofgalway.ie/mature)

[www.universityofgalway.ie/adult-learning](http://www.universityofgalway.ie/adult-learning)

[www.universityofgalway.ie/accesscentre](http://www.universityofgalway.ie/accesscentre)

[www.susi.ie](http://www.susi.ie)

[www.universityofgalway.ie/cao](http://www.universityofgalway.ie/cao)







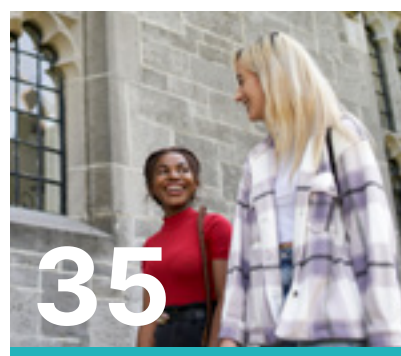
# Contents



University of Galway  
as a Mature Student

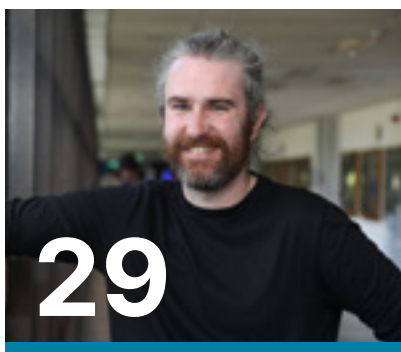


College of Arts, Social  
Sciences, and Celtic Studies



College of Medicine,  
Nursing and Health Sciences

Mature Public Information Evening	05
What is a Mature Student	09
How to Apply	10
Mature Student Scholarships	12
Mature Students Supports	13
Financial Support and Scholarships	14
Disability Support Service	17
Returning to Education – Access Diploma Programmes	18
QQI Applicants	20



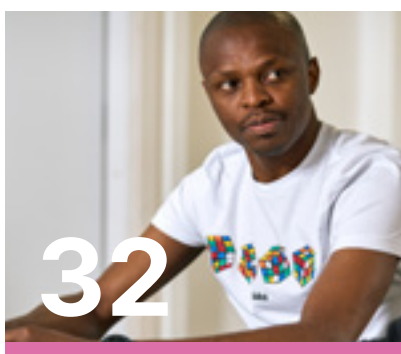
College of Business,  
Public Policy and Law



Financial Information,  
FAQ's, Leaving Certificate  
Points Converter



Degree Programmes and  
Mature Students Criteria  
Quick Guide and Allocation  
of Places



College of Science and  
Engineering

*Disclaimer; whilst every effort is made to ensure contents are accurate, the Mature Students Guide is issued only for the guidance of students. It does not impose or infer any legal obligations on the University of Galway. Course syllabi, fees, regulations or other information given may be altered, cancelled or otherwise amended at any time. The Mature Students Guide does not confer any rights on a student registered for any course of study*





# What is the *Definition* of a Mature Student?

## Full-time Degree Mature Student

You will qualify as a mature applicant for full-time study if you are at least 23 years of age on or before 1 January in the year you submit your application and if your Leaving Certificate qualifications are insufficient for standard admission.

Therefore, to apply to University of Galway for the academic year 2023, your birth date must be on or before 1 January 2000 and you must have lived in an EU/EEA Member State for three of the last five years. Students attending university on a full-time basis are generally not in full-time employment.

If you started a degree but did not complete it, you must be 5 years out of formal education to qualify for Free Tuition Fees again.

People who hold a Level 8 degree, who may be 23 or over, will not qualify for Free Tuition Fees but are still eligible to apply as a Mature Student. The costs can prevent studying again at this level. Such students are encouraged to look at Post Graduate study options.

## Part-Time Degree Mature Student

The Centre for Adult Learning and Professional Development recognises mature students at the age of 21 and over. This route may suit you if you are in full-time employment.

## Access Mature Programme

You will qualify as a mature applicant for an Access Foundation Diploma Programme if you are 23 or over. If you apply at the age of 22, please ensure that you turn 23 before 1 January for progression purposes to a full-time degree.

The Access Foundation Diploma Programme is a one-year part-time daytime course that aims to provide disadvantaged mature students with the opportunity to prepare, personally and academically, for an undergraduate course of full-time study of at least three years duration at University of Galway.

## School Leaver Access Programme

The Access Foundation Diploma Programme for School Leavers is a course specifically designed for students who are aged 22 or under and have a proven ability to study but were unable to progress due to financial, family, personal and other issues that disrupted their studies and denied progression to higher education.

### Find out more:

[www.universityofgalway.ie/mature](http://www.universityofgalway.ie/mature)

[www.universityofgalway.ie/access](http://www.universityofgalway.ie/access)

[www.universityofgalway.ie/adult-learning](http://www.universityofgalway.ie/adult-learning)



# How do I *Apply* as a Mature Student for a Full-time Degree?

**Mature students should apply online through the Central Applications Office ([www.cao.ie](http://www.cao.ie)) before the 1 February for all University of Galway's full-time undergraduate courses.**

The cost of applying through the CAO is approximately €45. There is an online discounted rate of €30 if you apply before the January 20th. It is important to complete the CAO application form thoroughly. Supporting documentation such as exam results, current studies and a strong statement of intent are essential components of your CAO application for some programmes.

If you use the online application process, you must forward your supporting documentation to the CAO immediately afterward with your name and CAO number clearly stated on each document. Do not send any documents to the University of Galway – these will not be reviewed. Documentation that supports your application will only be considered for admission purposes if it has been included with your formal application through the CAO. University of Galway does not accept late Mature Student applications after the 1st of February deadline.

**Important:** Your supporting documents must arrive in the CAO offices within seven days of your submission of the online application. It is of the utmost importance as a mature student that you ensure all relevant information, including evidence of formal education, certificates, personal statements and other requested documents, are included with your CAO application. Omission of this information may affect the success of your application to University of Galway.

The CAO also provides a comprehensive handbook, which includes information specific to mature students and must be read carefully in advance of submitting a final application.

Some Degree Programmes also require the applicant to register for assessments in association with their CAO application with certain deadlines and one testing date. Such programmes are Medicine (HPAT), Arts (MSAP) and Nursing (NMBI).

## **Find out more:**

[www.cao.ie](http://www.cao.ie)

<https://hpat-ireland.acer.org>

<https://www.msap-ireland.acer.org>

[www.nmbi.ie/Careers-in-Nursing-Midwifery](http://www.nmbi.ie/Careers-in-Nursing-Midwifery)







# Mature Student *Scholarships*

University of Galway has encouraged and facilitated the admission of mature students to its programmes over many years.

There are some scholarships that applicants can apply to before even receiving a college offer. More are given on merit or for socio-economic reasons.

**Scholarships include:**

- Mature Students Scholarships
- University Scholarships

These are applicable to Mature Students in particular. For details of each scholarship, application dates and eligibility criteria please refer to [universityofgalway.ie/mature/scholarships](http://universityofgalway.ie/mature/scholarships)

Terms and conditions apply

**Find out more:**

[www.universityofgalway.ie/mature/scholarships/](http://www.universityofgalway.ie/mature/scholarships/)

# Mature Student *Supports*

The following are a number of student support services that you can avail of as a full-time mature student:

## Return to Learning programme

The Access Centre's Return to Learning programme is offered in August to new incoming Mature and Access Mature students, so as to prepare them academically, socially and practically before the semester begins. The programme comprises of a series of workshops including practical study skills sessions, memory techniques, practical computing and advice on making the transition to third level education as well as information on the support services in the University. These workshops provide you with an opportunity to meet fellow mature students, make friends, and familiarise yourself with our campus.

## Orientation

The university runs an orientation week for all new first years in early September with an opportunity to hear college talks from the Deans, learn about academic and personal supports, and receive timetables and library tours.

## Academic Supports Available

In addition to the core subjects studied on an Access Course, University of Galway runs a number of practical skills workshops throughout the academic year ranging from academic writing, research skills, and practical study skills to revision techniques and exam preparation. These are open to all students.

The SUMS Centre provides mathematical supports for all students.

The Academic Writing Centre provides practical supports with writing essays guidance on how to improve your approach to assignment writing tasks. They have a specific arrangement with Access Centre to support our Access students.

Online study resources are available through Blackboard our internal learning system.

For other student supports such as Chaplaincy, Counselling, Crèche and others please see [www.universityofgalway.ie/student-services/](http://www.universityofgalway.ie/student-services/)

### Find out more:

[www.universityofgalway.ie/academic-skills](http://www.universityofgalway.ie/academic-skills)

[www.library.universityofgalway.ie/awc](http://www.library.universityofgalway.ie/awc)

[www.universityofgalway.ie/public-sites/s-u-m-s](http://www.universityofgalway.ie/public-sites/s-u-m-s)

[www.universityofgalway.ie/students](http://www.universityofgalway.ie/students)



# *Financial* Support and Scholarships

There are some scholarships that applicants can apply to before even receiving a college offer. More are given on merit or for socio-economic reasons. Terms and conditions apply

**Find out more:** [www.universityofgalway.ie/mature/scholarships/](http://www.universityofgalway.ie/mature/scholarships/)

## **Mature Student Entrance Scholarship**

The University awards several Entrance Scholarships annually to mature students based on grades.

## **University Scholarship**

University Scholarships are for adult learners who wish to complete a Bachelor's (Ordinary or Honours) Degree, for the first time.

**For full details of scholarships please visit** [www.universityofgalway.ie/accesscentre/scholarships/](http://www.universityofgalway.ie/accesscentre/scholarships/)

## **Financial Assistance Fund**

Some students may find themselves experiencing financial difficulties despite being careful with money during their time at university. All full-time students who attend a course of at least one year's duration leading to an undergraduate qualification are eligible to apply for the Financial Aid Fund. Applicants are means tested (taking financial situation and family circumstances into account). The application forms are usually available online from late September/early October.

**For more information, go to** [universityofgalway.ie/student\\_services/financialaidfund.html](http://universityofgalway.ie/student_services/financialaidfund.html)

## **1916 Bursary Fund**

The Bursaries are targeted at students who are socio-economically disadvantaged and who are from one or more of the following target groups that have low participation rates in higher education.

Each student who is awarded the 1916 Bursary will receive a bursary in the amount of €5,000 for each year of their undergraduate programme of study. The bursary will be paid each year of the course up to a maximum of four years for full-time students and six years for part-time students providing the recipient complies with the bursary guidelines and progresses to the next academic year of their course.

The 1916 Bursary Fund is a targeted funding scheme established by the Department of Education and Skills to support the implementation of the National Plan for Equity of Access to Higher Education.

**Full details available at** [www.universityofgalway.ie/accesscentre/scholarships/1916bursary-fund](http://www.universityofgalway.ie/accesscentre/scholarships/1916bursary-fund)

## **The University of Sanctuary Scholarship**

The University of Sanctuary Initiative at University of Galway aims to increase public awareness of International Protection and Traveller-specific topics across campus, in order to address the low levels of participation of International Protection Applicants, refugees, vulnerable immigrant groups, and Irish Travellers in third level education. These groups are too frequently excluded from education due to inequitable societal barriers, and we feel that through our actions we can make University of Galway a much more inclusive and equitable campus.

As part of our initiative, we are introducing a number of scholarships for both undergraduate and postgraduate courses at University of Galway which are open to International Protection Applicants, refugees, vulnerable immigrant groups, and Irish Travellers.

**Full details available at** [www.universityofgalway.ie/sanctuary](http://www.universityofgalway.ie/sanctuary) or email [uni.sanctuary@nuigalway.ie](mailto:uni.sanctuary@nuigalway.ie)









# Disability Support Service

Support for students with a disability, ongoing physical or mental health condition, or specific learning difficulty.

Students with a disability, ongoing health condition (physical or mental), or a specific learning difficulty, are encouraged to register with University of Galway's Disability Support Service (DSS). Approximately one in twenty students at University of Galway is registered with the DSS. You can find out more about this service and how to register at [www.universityofgalway.ie/disability/](http://www.universityofgalway.ie/disability/).

Most of the students who register with the DSS present with one or more of the following:

- Autism spectrum disorder (ASD)
- Attention deficit disorder (ADD)/attention deficit hyperactivity disorder (ADHD)
- Blind/vision impaired
- Deaf/hard of hearing
- Neurological condition, including epilepsy and brain injury
- Speech and language communication disorder
- Physical disability, including mobility issues
- Developmental coordination disorder (DCD)
  - Dyspraxia/Dysgraphia
- Mental health condition
- Significant ongoing illness
- Specific learning difficulty (SLD), including dyslexia or dyscalculia

## Register for disability support

To register for support, you will need to complete our online registration form at [www.universityofgalway.ie/disability](http://www.universityofgalway.ie/disability) and provide evidence of your disability, ongoing health condition, or specific learning difficulty. Once the form is submitted students will be contacted to arrange a needs assessment appointment with a Disability Advisor.

Supports and reasonable accommodations will be determined through an individual needs assessment; taking into account the nature and impact of your disability, evidence of disability, and course requirements.

For more information please visit [www.universityofgalway.ie/disability](http://www.universityofgalway.ie/disability), email [disabilityservice@universityofgalway.ie](mailto:disabilityservice@universityofgalway.ie) phone +353 91 492813 or visit the Access Centre, Ground Floor Áras Uí Chathail.



# Returning to Education

## – Access *Diploma* Programmes

University of Galway's Access Centre offers pre-university preparatory Access and Foundation diploma programmes for under-represented groups in higher education, including those from socio-economically disadvantaged backgrounds, students with disabilities and mature students including adults who may be in employment.

The preparatory programmes are student centred and are delivered in a very supportive environment by experienced tutors and staff. The overall aim is to give the chance of college to everyone and to provide an opportunity to progress to full-time or part-time degrees once the foundation year is completed. Each year over 200 students progress to university and excel in their new degrees. Continued support is provided to all students by the Access Centre.

### Subjects

Subjects offered are in the areas of Humanities, Science and Business and alongside core subjects such as Academic Writing, Study Skills, Technology and Career/College Guidance. Upon completion and meeting certain grades, students' progress to full-time degrees in these areas including Health Sciences, Law and Engineering.

Mature Students are those aged 23 years or over.

School Leavers are those aged 22 year or under.

### Outreach Access Courses

These free programmes are delivered in centres such as Tuam and An Cheathrú Rua which is a bi-lingual programme. They are made up of both Mature Students and School Leavers from disadvantaged backgrounds.

### Diploma in Foundation Studies Science, Technology and Engineering

This is a joint diploma delivery with ATU and is a fee-paying evening programme that runs two evenings and some Saturdays from September to May and is suitable for those over 22 who are interested in moving onwards to a full-time or part-time degree in University of Galway or ATU in areas such as Engineering, Science, Computer Science and Health Sciences. Academic subjects include Maths, Biology, Chemistry and Physics. Support Modules include Academic Writing, Study Skills, Technology and Career/ College Guidance. Fees are €380 for employed and €60 for unemployed.

### Diploma in Foundation Studies Business, Arts and Law

This is a joint diploma delivery with ATU and is a fee-paying evening programme that runs two evenings and some Saturdays from September to May and is suitable for those over 22 who are interested in moving onwards to a full-time or part-time degree in University of Galway or GMIT in areas such as Business, Humanities and Law. Academic Support Modules include Academic Writing, Study Skills, Technology and Career/College Guidance subjects include Maths, Economics, Business Skills and Accountancy. Fees are €380 for employed and €60 for unemployed.



## Progression Criteria to Degrees and Scholarships

All Modules studied in all Access and Diploma courses must be passed and completed and the attendance required is 85%. All courses are classroom-based over 2 semesters with exams, assignments and continuous assessment. Certain subjects require A's and practical work experience for some degrees including Health Sciences and Nursing (School Leavers). All students who want to proceed to full-time degrees apply to the CAO before 20 January for a discounted fee of €30. Places in degrees are allocated according to grades and competition for places. Certain high achieving mature students who enter 1st year of a full-time degree may receive a scholarship of €1,500 subject to terms and conditions. Other funding may be available through the Financial Aid Fund and Access Funds for School Leavers.

## How To Apply

Applications to all Access Foundation Diploma Programmes are completed online. Interviews apply. Details of documents required are available on the Access Centre website.

Applications to Diploma in Foundation Studies Science, Technology and Engineering/ Business, Arts and Law are completed online from July. No interviews apply. Information will be posted on the Access Centre website.

### Find out more:

[www.universityofgalway.ie/access](http://www.universityofgalway.ie/access)

[www.universityofgalway.ie/mature/part-time](http://www.universityofgalway.ie/mature/part-time)



# QQI (FETAC) Applications

**A number of Undergraduate programmes in University of Galway are open on a competitive basis to students who present with a recognised QQI (FETAC) Qualification.**

In order to be considered for a place on these programmes, students are required to have completed the requisite Level 5 or Level 6 course and hold a minimum of five distinctions in the requisite modules.

For the most up-to-date and comprehensive list of QQI (FETAC) entry routes and requirements, see the CAO website or discuss with your Education Advisor in your college of further education.

Please note that places are limited for QQI applicants in degree programmes. Quotas of places are advertised on the admissions website.

## Nursing

If you are doing a pre-nursing course and are over 23, you can also apply as a Mature Student and take the nursing exam in addition to completing your QQI course to have a second chance of obtaining a nursing place. All applications must be made before 1 February through the CAO on year of application for a full-time degree.

### Find out more:

[www.universityofgalway.ie/accesscentre/qqifetac/](http://www.universityofgalway.ie/accesscentre/qqifetac/)

[www.cao.ie](http://www.cao.ie)

[www.nmbi.ie/Careers-in-Nursing-Midwifery](http://www.nmbi.ie/Careers-in-Nursing-Midwifery)



# Quick Guide for Mature Students

For each degree, assessments, interviews or academic criteria and further education apply. Please refer to this guide for detailed information on all application criteria. In all CAO applications include a Statement of Intent and Relevant Information to the degree applied for. Include additional pages if necessary.

Course Code	Course Name	Mature Places Allocated 2020	Quick Guide For Mature Students
GY101	Bachelor of Arts (Joint-Honours)	Unlimited	MSAP
GY104	BSc (Psychology)	1	MSAP, Further Education in Psychology, Statement of Intent.
GY105	History	Unlimited	MSAP
GY109	Arts (Mathematics and Education)	2	MSAP, Honours Maths, Experience and Statement of Intent.
GY110	Arts with Children's Studies (AWC) / Arts (Children's Studies) (ACS)	4	MSAP, Background in Children or Youth Studies through Further Education, Work Experience. On your CAO application please indicate which stream of GY110 you would like to study.
GY111	Arts (English and Creative Writing)	2	MSAP, Evidence of written works or publishings and recent studies in a relevant area.
GY113	Human Rights with Arts	2	MSAP and work/life experience and further education in human rights issues.
GY118	Bachelor of Arts in Drama, Theatre & Performance Studies	2	MSAP and work/life/performance experience and further education in theatre.
GY119	BA with Journalism	1	MSAP and work/life/ experience and further education in writing.
GY122	Na Dána (Cumarsaid)	2	Irish from Leaving Cert to an Honours standard both written and oral, written assessment and interview.
GY123	BSc Applied Social Sciences	3	MSAP and work/life/experience and further education in social issues.
GY125	Arts (Digital Arts and Technology)	2	MSAP exam plus Leaving Cert Mathematics. Evidence of IT experience in web design and coding is desirable.
GY127	Arts (Film and Digital Media)	2	MSAP exam plus evidence of interest in film and screen with a brief description of a topic of a media of your choice and further education studies completed in a relevant area.
GY128	Arts (Global Languages) Places to be approved	2	MSAP exam plus evidence of an aptitude for languages supported by either further education, leaving cert or life experience of living in a non-English speaking country.
GY129	Arts (Global Experience)	2	MSAP exam plus evidence of an aptitude for languages supported by either further education, leaving cert or life experience of living in a non-English speaking country.
GY130	Arts (Music)	2	MSAP exam plus ability to read music.
GY132	Government (Politics, Economics and Law)	2	MSAP Exam.
GY133	BA Education (Computer Science and Mathematical Studies)	2	MSAP Exam plus Honours Maths.
GY134	BSc (Geography and Geosystems)	2	MSAP Exam plus evidence of Maths and Science ability from Leaving Certificate or equivalent.
GY135	Arts (Global Media)	2	MSAP plus evidence of media background and further education.
GY136	Na Dána (Léann Teanga)	2	Evidence or Gaeilge or French from the Leaving Cert. Irish Interview applies and an Irish Written Test is required. MSAP NOT required.
GY137	Child, Youth and Family: Policy and Practice	2	MSAP, Background in Children or Youth Studies through Further Education, Work Experience.
GY201	Commerce	Unlimited	Criteria for selection include an assessment of the candidate's ability to benefit from, and to undertake the programme. Experience and educational background are taken into account. An aptitude for Mathematics is beneficial. Interviews are not required.
GY202	Commerce with French	Unlimited	Criteria as for GY201. In addition, you must submit evidence of certificates/diplomas obtained studying the French language.
GY203	Commerce with German	Unlimited	Criteria as for GY201. In addition, you must submit evidence of certificates/diplomas obtained studying German.
GY204	Commerce with Spanish	Unlimited	Criteria as for GY201. In addition, a proven aptitude for learning modern languages.
GY206	Business Information Systems	Unlimited	Criteria as for GY201. In addition, an aptitude for Mathematics (normally Leaving Certificate ordinary level) is required.
GY207	Commerce (Accounting)	Unlimited	Criteria as for GY201 and should have studied maths to Leaving Certificate standard or equivalent. A good standard of English is an advantage. An aptitude for Accountancy (normally Leaving Certificate or equivalent) is desirable and where possible to have taken exams and modules in an Accountancy Technician course.
GY208	Commerce (Gaeilge)	2	Criteria as for GY201 and have a HC3/H4 in Leaving Certificate Irish.
GY209	Commerce (Global Experience) Places to be approved	2	Criteria as for GY201.



Course Code	Course Name	Mature Places Allocated 2020	Quick Guide For Mature Students
GY261	Bachelor of Business Studies (International Hotel Management)	1	Criteria as for GY201.
GY250	Law & Business	Unlimited	Criteria include an aptitude for legal study, Accountancy, Mathematics, and the likelihood of successful completion of the course. A strong statement of intent is required in the CAO application. A good standard of the English, written and verbal (normally leaving cert standard or equivalent). Students may be required to attend an interview.
GY251	Law (BCL)	Unlimited	A strong statement of intent is required in the CAO application. A good standard of the English, written and verbal (normally leaving cert standard or equivalent). Students may be required to attend an interview.
GY252	Law (BCL) and Human rights	1	A strong statement of intent is required in the CAO application plus evidence of voluntary work in Human Rights areas. A good standard of the English, written and verbal (normally leaving cert standard or equivalent). Students may be required to attend an interview.
GY253	Law and Taxation	1	Criteria as for GY250.
GY254	Law (BCL) Criminology and Criminal Justice	1	A strong statement of intent is required in the CAO application. A good standard of the English, written and verbal (normally leaving cert standard or equivalent). Students may be required to attend an interview.
GY301	Science (Undenominated)	Unlimited	Evidence of mathematical and science ability is desired either from the Leaving Certificate or from Further education completed. Please include statements of Leaving Cert exam.
GY303	Biomedical Science	Unlimited	Evidence of mathematical and science ability is desired either from the Leaving Certificate or from Further education completed. Please include statements of Leaving Cert exam.
GY304	Biotechnology	Unlimited	
GY308	Environmental Science	Unlimited	
GY309	Financial Mathematics and Economics	Unlimited	
GY310	Marine Science	Unlimited	
GY313	Health and Safety Systems	Unlimited	
GY314	Earth and Ocean Sciences	Unlimited	
GY318	Biopharmaceutical Chemistry	Unlimited	
GY319	Mathematical Science	Unlimited	
GY320	Physics with degree options	Unlimited	
GY321	Genetics and Genomics	Unlimited	
GY322	Agricultural Sciences	Unlimited	Evidence of mathematical and science ability from Leaving Cert including Agricultural Science. Further Education and advantage in a relevant area.
GY401	Engineering (Undenominated)	Unlimited	A minimum of grade C3 Higher Level Maths (H5) is desirable and evidence of science studied at Leaving Cert Level or equivalent. IT and Technical Drawing subjects, will be considered; therefore please include statements of Leaving Cert exam.
GY402	Civil Engineering	Unlimited	
GY405	Mechanical Engineering	Unlimited	
GY406	Electronic and Computer Engineering	Unlimited	
GY408	Biomedical Engineering	Unlimited	
GY410	Project and Construction Management	Unlimited	
GY413	Engineering - Energy Systems	Unlimited	
GY414	Engineering - Electrical and Electronic	Unlimited	
GY350	Computer Science and Information Technology	Unlimited	A minimum of grade C3 Higher Level Maths (H5) is desirable and evidence of science studied at Leaving Cert Level or equivalent. IT and Computer programming subjects, will be considered; therefore please include statements of Leaving Cert exam.
GY501	Medicine (Surgery and Obstetrics)	5	Honours Leaving Cert Laboratory Science (C2 or H4 minimum) such as Chemistry, Physics, Biology or Agricultural Science is required. HPAT test must be completed and Interview for shortlisted candidates.
GY502	Occupational Therapy	2	Honours Leaving Certificate Science and work experience in a health care area is required for consideration to Occupational Therapy, Speech and Language Therapy and Podiatric Medicine. A strong Statement of Intent is required in your CAO application.
GY503	Speech and Language Therapy	2	Honours Leaving Certificate Science and work experience in a health care area is required for consideration to Occupational Therapy, Speech and Language Therapy and Podiatric Medicine. A strong Statement of Intent is required in your CAO application.
GY504	Podiatric Medicine	2	Honours Leaving Certificate Science and work experience in a health care area is required for consideration to Occupational Therapy, Speech and Language Therapy and Podiatric Medicine. A strong Statement of Intent is required in your CAO application.
GY515	Nursing Science (General)	9	Nursing Careers Exam.
GY516	Mental Health Nursing	5	Nursing Careers Exam.
GY517	Midwifery Science	4	Nursing Careers Exam.



I've always been fascinated by the medical side of things. Both in terms of being supportive, empathetic, and caring, as well as the physical/academic side of anatomy and how the body works. When I discovered there was a healthcare assistants' program, I thought it was fantastic and that I would be able to fulfil my dream in part, so I enrolled in FETAC. Then an opportunity arose to do an Access Course, science route, at University of Galway during the pandemic.

Two nights a week to reacquaint myself with life after leaving school, even though I never truly stopped (small courses) - constantly striving to achieve a pinnacle where my aim and dream could be realized. We were guided through the entire process by fantastic, experienced tutors who provided us with all the extra aid we needed, particularly in arithmetic and academic writing.

I was encouraged to apply through the CAO process and then again through the NMBI, as they had a different testing process. The dream of one day attending university was always in the back of my mind. However, all the normal anxieties of cost, time, transport still overclouded the prospects.

I was overjoyed with my Access Course results, and the knowledge and experience I gained were fantastic. I was offered a place in Midwifery - I had never imagined that I would be able to attend University, let alone such a difficult course. We were given academic advisors, linked in with funding organisations and told where we could always get support and guidance. I am pleased to say that I have completed my first year and am completely impressed with the course, my future prospects, and the opportunity to live my dream. If I can encourage anyone, no matter your age or circumstances - if I can, you can!

**Karen Strydom**  
47, *Midwifery*





# College of Arts, Social Sciences, and Celtic Studies

The College of Arts, Social Sciences, and Celtic Studies is at the cutting edge of new thinking in every subject offered within our programmes. Our degrees are designed to inspire your intellectual curiosity, build your capacity for creative and critical thinking.

## Joint-Honours

*(Statement of Intent not required in the CAO application unless applying for other listed degrees to follow)*

### **GY101 Bachelor of Arts**

MSAP Exam Only and No Interviews  
(score of over 80 required)

### **GY137 Arts (Child, Youth and Family: Policy and Practice)**

MSAP Exam plus knowledge of the degree, evidence of work in a related area and all further education courses completed in a relevant area. Interview may apply.

## BA Degrees

*(A Statement of Intent must be completed in your CAO application)*

### **GY111 Bachelor of Arts with Creative Writing**

MSAP Exam plus knowledge of the degree, evidence of written work and all further education courses completed in a relevant area. Interview may apply.

### **GY113 Bachelor of Arts with Human Rights**

MSAP Exam plus knowledge of the degree, evidence of work in a related area and all further education courses completed in a relevant area. Interview may apply.

### **GY119 Bachelor of Arts Journalism**

MSAP Exam plus knowledge of the degree, evidence of work in a related area and all further education courses completed in a relevant area. Interview may apply.

### **GY110 Arts with Children's Studies (Child and Youth studies)**

MSAP Exam plus knowledge of the degree, evidence of work in a related area and all further education courses completed in a relevant area. Interview may apply. On your CAO application please indicate which stream of GY110 you would like to study

## Denominated

*(A Statement of Intent must be completed in your CAO application)*

### **GY118 Bachelor of Arts in Drama, Theatre & Performance Studies**

MSAP Exam plus knowledge of the degree, evidence of work in a related area and all further education courses completed in a relevant area. Interview may apply.

### **GY104 Bachelor of Arts (Psychology)**

MSAP Exam and evidence of further education in the area of psychology. Psychology can also be studied through the Arts Omnibus GY101 and mature applicants are encouraged to put both programmes on their CAO application

### **GY105 Bachelor of Arts (History)**

MSAP Exam Only (Statement of Intent not required in the CAO application)

### **GY109 Bachelor of Arts (Mathematics and Education)**

MSAP Exam plus Honours Leaving Certificate Maths.

# College of Arts, Social Sciences, and Celtic Studies *(Continued)*

## **GY123 BSc (Applied Social Sciences)**

MSAP exam plus knowledge of the degree, evidence of work in a related area and all further education courses completed in a relevant area. Interview may apply.

## **GY125 Bachelor of Arts (Digital Arts and Technology)**

MSAP exam plus Leaving Cert Mathematics. Evidence of interest and/or experience in Information Technology is desirable. A strong statement of intent should show knowledge of the degree, your motivation for studies and efforts of any further education completed in recent years

## **GY127 Bachelor of Arts (Film and Digital Media)**

MSAP exam plus evidence of interest in film and screen with a brief description of a topic of a media of your choice and further education studies completed in a relevant area.

## **GY128 Bachelor of Arts (Global Languages)**

MSAP exam plus evidence of global languages, not including English.

## **GY129 Bachelor of Arts (Global Experience)**

MSAP exam plus evidence of an aptitude for languages supported by either further education, leaving cert or life experience of living in a non-English speaking country.

## **GY130 Bachelor of Arts (Music)**

MSAP exam and must have the ability to read music.

## **GY132 Bachelor of Government (Politics, Economics and Law)**

MSAP exam.

## **GY133 BA Education (Computer Science and Mathematical Studies)**

MSAP Exam plus Honours Maths with a H5.

## **GY134 BSc (Geography and Geosystems)**

MSAP Exam plus evidence of Maths and Science results from the Leaving Cert or from further education in these areas. This degree involves a proficient level of maths and science ability. A strong statement of intent in the CAO application demonstrating knowledge of the degree.

## **GY135 Bachelor of Arts (Global Media)**

MSAP Exam plus evidence of media interest and further education completed in a relevant area. A strong statement of intent is required in your CAO application demonstrating knowledge and commitment to the degree.

## **Acadamh na hOllscolaíochta Gaeilge**

### **GY122 Na Dána (Cumarsáid agus Gaeilge)**

Leaving Certificate Irish, Irish Interview, Irish Written Test is required. MSAP NOT required. Demonstrate knowledge of the degree, evidence of work in a related area and all further education courses completed in a relevant area in your CAO application.

### **GY136 Na Dána (Léann Teanga)**

Degree Options: BA Gaeilge agus Léann an Aistriúcháin ó BA (Fraincis agus Léann an Aistriúcháin) Leaving Certificate Irish and French for BA Fraincis. Irish Interview applies and an Irish Written Test is required. MSAP NOT required. Demonstrate knowledge of the degree, evidence of work in a related area and all further education courses completed in a relevant area in your CAO application.



# College of Arts, Social Sciences, and Celtic Studies *(Continued)*

## MSAP (Arts) Assessment Information

Applications to the College of Arts, Social Sciences and Celtic Studies programmes are considered on the results of the MSAP - Mature Students Admissions Pathway - exam (except Na Dána degrees).

In addition, an interview may apply if shortlisted for certain programmes listed in this guide. Not everyone who applies for restricted programmes is called to interview. Places are limited.

All are encouraged to write a strong Statement of Intent in your CAO application stating your knowledge of degree, profession, why choose you and any further relevant studies completed or life experience gained that would make you an ideal student. This does not apply if only applying for

GY101 or GY105 as MSAP score is only required. A minimum of an overall score of 80 is required to enter these programmes. For all other degrees the highest performers of MSAP and other criteria is considered.

Information on the MSAP test for 2023 will be on their website, along with dates, process and setting up your ACER personal account. The cost is approximately €102 if applied for on time. All queries on MSAP can be sent to [msap-ireland@acer.org](mailto:msap-ireland@acer.org).

If you need special support for the exam you will need to supply ACER with evidence of your disability. Preparation Practice papers, tips and supports are available online.



# Mature Students Admissions Pathway (*MSAP*) Procedure

Candidates are required to complete the MSAP, independently administered by ACER (Australian Council for Educational Research). Steps to register for the MSAP assessment are:

1. Apply through the CAO at [www.cao.ie](http://www.cao.ie) before 1 February.
2. A CAO number is given to you via email.
3. Apply directly to ACER to register for the MSAP assessment before 2 February. Pay the fee of €102 by Diners Club, Mastercard or VISA assessment, materials required for the test, provision of assessment results to the candidate, and the transfer of results to the CAO. Early application for the assessment is advisable. If you do not have a credit card, single-use cards are available for purchase from banks and shops for use on the internet.

The fee for MSAP-Ireland for 2023 is €102 per candidate during the timely registration period (November 2022 - 29 January 2023). After this date, an additional fee of €35 applies to test bookings. Test Date TBC on website. MSAP is now only conducted online via remote proctoring.

## Find out more:

<https://hpat-ireland.acer.org/>  
[www.cao.ie](http://www.cao.ie)  
[www.universityofgalway.ie/undergrad](http://www.universityofgalway.ie/undergrad)  
[www.universityofgalway.ie/arts](http://www.universityofgalway.ie/arts)





I did the Access Foundation Science course in 2020/2021 and it could not have prepared me better for a Health Science degree. I had not done science for my Leaving Cert, so was worried I would find it difficult.

The tutors were incredibly helpful and supportive and although it was hard at times, there was so much help available when I needed it. It got me used to the routine of studying, assignments, and exams. The supplementary modules like academic writing really set me up for success in a full-time course as I could start off on the right foot from day one.

By the time I started my degree, I was already familiar with the University's many resources and so could focus on learning. Meeting other mature students was also helpful as all of us had similar concerns and interests, and so could support each other.

### **Síafra Conroy**

*25, 1st Year Speech and Language  
Therapy Student*



# College of Business, Public Policy, and Law

University of Galway has a long history and is internationally recognised for producing high-quality, market-ready graduates in all areas of Business, Public Policy and Law. We offer a wide range of programmes, which are all taught by staff who are at the forefront of original thinking and innovation, ensuring you get the best student experience for your future career.

## J.E. Cairnes School of Business & Economics

### GY201 Bachelor of Commerce

Criteria for selection include an assessment of the candidate's ability to benefit from, and to undertake, the programme. Experience and educational background are taken into account. Evidence of Mathematics from the Leaving Cert is required. Interviews are not required. Include a strong statement of intent in your CAO application demonstrating knowledge of the degree, professions, and career plans.

### GY202 Bachelor of Commerce (International with French)

Criteria as for GY201. In addition, you must submit evidence of certificates/ diplomas obtained studying the French language.

### GY203 Bachelor of Commerce (International with German)

Criteria as for GY201. In addition, you must submit evidence of certificates/ diplomas obtained studying German.

### GY204 Bachelor of Commerce (International with Spanish)

Criteria as for GY201. In addition, a proven aptitude for learning modern languages.

### GY206 Bachelor of Science (Business Information Systems)

Criteria as for GY201.

### GY207 Bachelor of Commerce (Accounting)

Criteria as for GY201. Candidates should have studied maths to Leaving Certificate standard or equivalent. A good standard of English is an advantage. An aptitude for Accountancy (normally Leaving Certificate or equivalent) is desirable and where possible to have taken exams and modules in an Accountancy Technician course.

### GY208 Bachelor of Commerce (Gaeilge)

Criteria as for GY201 and have a H4 in Leaving Certificate Irish.

### GY209 Bachelor of Commerce (Global Experience)

Criteria as for GY201.

## Shannon College of Hotel Management

### GY261 Bachelor of Business Studies (International Hotel Management)

Criteria as for GY201



# College of Business, Public Policy, and Law *(Continued)*

## School of Law

### **GY250 Bachelor of Law & Business**

Accountancy (normally leaving cert standard or equivalent) and Mathematics (normally leaving cert standard or equivalent) are required. In addition, a strong statement of intent is required in the CAO application. A good standard of the English, written and verbal (normally leaving cert standard or equivalent). Students may be required to attend an interview.

### **GY251 Bachelor of Law (BCL)**

A strong statement of intent is required in the CAO application. A good standard of the English, written and verbal (normally leaving cert standard or equivalent). Students may be required to attend an interview.

### **GY252 Law (BCL) and Human Rights**

Criteria for selection include an assessment of the candidate's ability to benefit from, and to undertake, the programme. Experience and educational background are taken into account. Voluntary or work experience in Human Rights issues. Interviews are not required.

### **GY253 Law and Taxation**

Accountancy (normally leaving cert standard or equivalent) and Mathematics (normally leaving cert standard or equivalent) are required. In addition, a strong statement of intent is required in the CAO application. A good standard of English, written and verbal (normally leaving cert standard or equivalent). Students may be required to attend an interview.

### **GY254 Law (BCL), Criminology and Criminal Justice**

A strong statement of intent is required in the CAO application. A good standard of the English, written and verbal (normally leaving cert standard or equivalent). Students may be required to attend an interview.

### **GY101 Bachelor of Arts (Joint-Honours) in Law**

Criteria is MSAP exam Only - Refer to page 25

### **GY201 Law in Bachelor of Commerce**

Criteria for selection include an assessment of the candidate's ability to benefit from, and to undertake, the programme. Experience and educational background are taken into account. Leaving Cert Mathematics is required or equivalent. Interviews are not required.

## Applications

Apply through the CAO before 1 February 2023.

## Assessment procedure

Emphasis is placed on the academic criteria listed for each programme and on evidence of recent academic achievements (within the past three years is desirable). Factors which may assist in determining suitability for all courses include: Relevant work/life experience  
Absence of previous opportunity to undertake third-level education  
Leaving Certificate results and other educational qualifications

## Work/Life experience

A detailed account of this is beneficial to your application. An aptitude for organisation, decision-making, and management is desirable. Commitment to your interests is sought.

## Statement of Intent in the CAO

This should explain why you are motivated to pursue a degree in your chosen area of interest and how you see your degree being an asset to your future plans. Any personal interests or business/language related activity would also be of interest.

### Find out more:

[www.universityofgalway.ie/law/](http://www.universityofgalway.ie/law/)

[www.universityofgalway.ie/commerce](http://www.universityofgalway.ie/commerce)

[www.cao.ie](http://www.cao.ie)



# College of Science and Engineering

At University of Galway you will get a first-class education across all Science and Engineering disciplines, taught by lecturers who are leading experts in their fields, and who will prepare you for an interesting and challenging future in your chosen specialism.

GY401 Undenominated Engineering

GY402 BE (Civil)

GY405 BE (Mechanical)

GY406 BE (Electronic and Computer)

GY408 BE (Biomedical)

GY410 BSc (Project & Construction Management)

GY413 BE (Energy Systems)

GY414 BE (Electrical & Electronic)

GY350 BSc (Computer Science & Information Technology)

GY301 Bachelor of Science

GY303 BSc (Biomedical Science)

GY304 BSc (Biotechnology)

GY308 BSc (Environmental Science)

GY309 BSc (Financial Mathematics and Economics)

GY310 BSc (Marine Science)

GY313 BSc (Environmental Health and Safety)

GY314 BSc (Earth and Ocean Sciences)

GY318 BSc (Biopharmaceutical Chemistry)

GY319 BSc (Mathematical Science)

GY320 BSc (Physics – degree options in Applied, Astrophysics, Biomedical, Theoretical)

GY321 BSc (Genetics and Genomics)

GY322 BSc (Agricultural Sciences)



# College of Science and Engineering *(Continued)*

## Engineering Criteria

A minimum of grade C3 Higher Level Maths (H5) is desirable for all Engineering Degrees and Computer Science degrees. Evidence of science studied at Leaving Cert Level or equivalent. IT and Technical Drawing subjects will be considered; therefore, please include statements of Leaving Cert exam. Qualifying Maths Exam may apply in some cases. Interviews are not required.

## Science Criteria

Leaving Certificate Maths and science is required or equivalent from further education. Please include statements of Leaving Cert exam. Interviews are not required. A statement of intent should explain why you are motivated to pursue a degree in your chosen area of interest and how you see your degree being an asset to your future plans. Any personal interests in science would also be of interest.

## Applications

Apply through the CAO before 1 February 2023.

## Assessment procedure

Emphasis is placed on the academic criteria above and on evidence of recent academic achievements (within the past three years is desirable). Factors which may assist in determining suitability for all courses include relevant work/life experience. Absence of previous opportunity to undertake third-level education Leaving Certificate results and other educational qualifications

## Work/Life experience

A detailed account of this is beneficial to your application. An aptitude for organisation, decision-making, and management is desirable. Commitment to your interests is sought.

## Statement of Intent in the CAO

This should explain why you are motivated to pursue a degree in your chosen area of interest and how you see your degree being an asset to your future plans. Any personal interests in engineering, design, medical devices, computing, building etc. would also be of interest.

### Find out more:

[www.cao.ie](http://www.cao.ie)

[www.universityofgalway.ie/engineering](http://www.universityofgalway.ie/engineering)





# College of Medicine, Nursing and Health Sciences

The College of Medicine, Nursing and Health Sciences comprises three schools: Health Sciences, Nursing and Midwifery, and Medicine. We work to provide programmes that are grounded in clinical expertise and cutting-edge research to best prepare you for a challenging career in the changing healthcare environment.

**GY501 Bachelor of Medicine (MB) of Surgery (BCh) and of Obstetrics (BAO)**

**GY502 BSc (Occupational Therapy)**

**GY503 BSc (Speech and Language Therapy)**

**GY504 BSc (Podiatric Medicine)**

**GY515 Bachelor of Nursing Science (General)**

**GY516 Bachelor of Nursing Science (Mental Health)**

**GY517 Bachelor of Midwifery Science**



# College of Medicine, Nursing and Health Sciences *(Continued)*

## Criteria for Medicine

The subject eligibility requirement is a C2/H4 grade in a Leaving Certificate higher level laboratory science subject (i.e. Chemistry, Physics, Biology, Physics with Chemistry (joint) or Agricultural Science) or equivalent. You need to have achieved this grade in order to be eligible to apply, ie you must have achieved this grade by taking the Leaving Certificate examination in the year prior to applying or earlier.

Evidence of English proficiency is required where English is not your first language. All applicants must sit HPAT-Ireland. You need to register for this in advance. Please see the website for closing date details and date of HPAT-Ireland for 2023 <https://hpat-ireland.acer.org/>

Applicants' scores on HPAT-Ireland are used to rank order applicants for a Multiple Mini Interview (MMI). The top performing applicants are called to this interview process. The maximum number of times an applicant can be interviewed is twice. University of Galway is an undergraduate medical school, and the mature entry route is aimed at widening diversity. Applicants who qualify to apply for graduate entry medicine elsewhere (i.e. achieving a second class honours, grade one-2:1 undergraduate degree) are not eligible to apply to the University of Galway Mature Entry Route. Applicants who have a place in another medical school are not considered eligible to apply for Mature Entry to Medicine at University of Galway.

Uptake of a place in medicine is contingent on meeting the Garda/Police vetting, Occupational health requirements and good standing regulations, as per University of Galway admissions policies and regulations. See website for more details and updates.

## Criteria for Nursing and Midwifery

An aptitude test is the only requirement considered for Mature Nursing places and is carried out by the NMBI. The score of the test determines places which are highly competitive. A CAO statement of Intent is not required for Nursing. Having applied through the CAO before 1 February 2023, Mature Applicants must go to [https:// www.nmbi.ie/Careers-in-Nursing-Midwifery/How-toapply/Mature-Applicants](https://www.nmbi.ie/Careers-in-Nursing-Midwifery/How-toapply/Mature-Applicants) and follow all instructions to register for the Nursing Test. Details of test and handbook are generally available in March. Please contact the NMBI directly for details of test and technical issues or support.

## Criteria for Health Sciences

Honours Leaving Certificate Science and work experience in a health care area is required for consideration to Occupational Therapy, Speech and Language Therapy and Podiatric Medicine. A strong statement of Intent is required in your CAO application.

## Assessment procedure:

Emphasis is placed on the academic criteria above and on evidence of recent academic achievements (within the past three years is desirable). Factors which may assist in determining suitability for all courses include: Relevant work/life experience Absence of previous opportunity to undertake third level education Leaving Certificate results and other educational qualifications.

## Work /Life experience

A detailed account of this is beneficial to your application. Knowledge of the degree and profession are required along with evidence of having health care experience.

## Applications

Apply through the CAO before 1 February 2023.

### Find out more:

[www.universityofgalway.ie/medicine/](http://www.universityofgalway.ie/medicine/)  
[www.hpat-ireland.acer.org/](http://www.hpat-ireland.acer.org/)  
[www.universityofgalway.ie/nursing/](http://www.universityofgalway.ie/nursing/)  
[www.nmbi.ie/Careers-in-Nursing-Midwifery](http://www.nmbi.ie/Careers-in-Nursing-Midwifery)  
[www.universityofgalway.ie/healthsciences/](http://www.universityofgalway.ie/healthsciences/)  
[www.cao.ie](http://www.cao.ie)



# Financial Information

Returning to full-time education can place a strain on your finances. There are many factors to be considered - rent, utility bills, food, travel and class materials for example. It is important to evaluate whether you can financially afford to pursue a fulltime degree.

## Undergraduate Fees

EU undergraduate fees consist of three elements:  
1. Tuition Fee (tax exempt) 2. Student contribution charge 3. Student facilities levies (covers cost of registration, examinations and student services).

### 1. Tuition fee

Under the 'free fees' initiative from the Department of Education and Skills, the state pays the tuition fee for eligible full-time, nonrepeat undergraduate EU students who:

- Are first time undergraduates
- Hold EU nationality or official refugee status
- Have been ordinarily resident in an EU member state for at least three of the five years preceding their entry to an approved full-time course.

If you do not satisfy the above criteria for 'free fees', you may be eligible for 'EU fees'. There are two ways to qualify for EU fees, through nationality or residency:

- **Nationality:** If the student holds EU nationality or official refugee status and where a student has received ALL his/her full-time post-primary education within the EU but has not been resident for three of the five years immediately prior to university entry, the student is eligible for EU fees. Euro nationality can be proved with an EU passport, an original Irish Birth Certificate, an original EU National Identity Card or official Irish refugee status.

- **Residency:** The student's principal residence for the purpose of taxation must have been in an EU member state for at least three of the five years preceding their entry to an approved third-level course. (Prior residence as a fulltime student alone does not qualify a student for EU fee rates)

If you do not qualify for the Free Fees Initiative or a Student Grant, then you may be liable to pay the full tuition fees for your programme of study. For all information in relation to fees and related criteria, please refer to [www.universityofgalway.ie/fees](http://www.universityofgalway.ie/fees)

### 2. Student contribution charge:

The student contribution charge, which will be approximately €3,000 in 2022, is payable by all students. However, students who have applied and are successful in their application for a higher education grant or scholarship will have this student contribution charge paid on their behalf by the scholarship provider or higher education grant authority.

### 3. Student facilities levies:

This is payable by all students and will be circa €140 in 2022. Further information may be obtained from the Fees Office

### Find Out More

| [www.universityofgalway.ie/fees](http://www.universityofgalway.ie/fees)



## Funding options

- SUSI Student Grants
- Back to Education Allowance (BTEA) (Department of Social Protection)

### SUSI Student Grants

Student Grants are applied for online and are administered centrally through SUSI. If you are eligible, it may cover all or part of your fees and assist you with maintenance payments to contribute to living expenses while you study. The residency requirement in the State for grant eligibility is three out of the past five years for new applicants, be a holder of an EU passport and have official refugee status. The duration of the break in studies required for re-entry as an independently assessed mature student is three years.

**BTEA:** Typically, a claimant would have to be in receipt of social welfare payments for nine consecutive months or more prior to returning to college, but there can be exceptions to this rule, usually in cases involving statutory redundancy. To see if you qualify for BTEA check [www.welfare.ie](http://www.welfare.ie) Students in receipt of the BTEA are not eligible for the maintenance portion of the Student Grant. Such students should still apply for a grant to pay their registration fees (and in some cases, their tuition fees).

## Social Welfare Payments for part-time students

It is possible for mature students who are unemployed to attend part-time programmes at University of Galway and retain their Jobseeker's Benefit (JB) or Jobseeker's Allowance (JA) and associated secondary benefits such as Rent Allowance.

### Find Out More:

Department of Social Protection Contacts:

Unemployment Payments/BTEA:

**T: 1890 92 79 99**

Pension/Invalidity/Disability Payments:

**T: 1890 50 00 00**

Lone Parent's Allowance:

**T: 1890 92 77 70**

[www.susi.ie](http://www.susi.ie)

[www.welfare.ie](http://www.welfare.ie)

## Scholarships and Bursaries

For a list of additional scholarships and bursaries that you can apply for and will not impact upon SUSI funding or BTEA please see page 13 of this guide. Know when you need to apply. In some cases applications are made before your degree starts



# Frequently Asked Questions

## When do you apply?

The deadline for all CAO applications is 1 February 2023 is the. The CAO office must have received your application and all supporting documentation by this date. Online applications are recommended for admission to University of Galway's undergraduate programmes. Using a single CAO application, you may choose from the entire range of courses listed in this guide. You may apply for up to 10 courses in the Level 8 category and 10 courses in the Level 7 category. Please note that all undergraduate degrees taught at University of Galway are Level 8 degrees.

### For more information:

Central Applications Office Tower House,  
Eglinton Street, Galway City, Ireland.

**T:** +353 (0)91 509 800

**E:** [info@cao.ie](mailto:info@cao.ie) **W:** [www.cao.ie](http://www.cao.ie)

## What full-time degree programmes can I apply for?

All of University of Galway's degrees are open to mature students.

## What happens if my application is unsuccessful, and I am not accepted for 2023 entry?

If you are a mature student who has applied for Science/Engineering/ Technology/Health Sciences or Business/Arts or Law and have been unsuccessful, an email will be sent to you advising you to apply for the relevant Diploma in Foundation Studies Course in order to meet the criteria for 2023 entry. This email will be sent in late July.

## How are applications assessed?

All applications are considered on the grounds of mature numbers that are received by the CAO closing date, 1 February. These applications are processed by the CAO office and forwarded to University of Galway. University of Galway does not accept direct applications to the University itself. The University will review each application, seeking evidence of your academic ability as well as your interest in and aptitude for the programme for which you have applied. Refer to each college entry in this guide to see the criteria required for each programme.

## What happens if I am successful and accept a place at University of Galway?

Registration: late August to late September. Registration details will be provided via email to all students after the Leaving Certificate results are released.

Mature Students' Return to Learning Programme will run in late August. You will receive all information on the Return to Learning programme by email in July 2023.

Main Campus Student Orientation occurs generally the first week in September.

## Where can I get a copy of my Leaving Certificate?

You can request a certified statement of your results from the State Examinations Commission (€14.50) at the following address:

Statements Section,  
State Examinations Commission,  
Cornamaddy,  
Athlone,  
Co Westmeath.



**T:** +353 90 6442808/6442810  
**E:** [statements@examinations.ie](mailto:statements@examinations.ie)  
**W:** [www.examinations.ie](http://www.examinations.ie)

If you completed school leaving exams outside Ireland, you should also include a copy of your results and a certified English translation of the transcript where applicable. If you sat the Leaving Certificate between 1985 and 2022, you must supply your Leaving Certificate number for some degrees and the year the exam was taken in your CAO application. If you completed the Leaving Certificate prior to 1985, please enclose the official results

### Can I make a late application to University of Galway after 1 February?

It is not possible to apply on the grounds of mature years after 1 February. However, you may make a late application based on Leaving Certificate results only, up to 1 May. Refer to the Leaving Certificate Points at [www.nuigalway.ie/undergrad](http://www.nuigalway.ie/undergrad) and see the Undergraduate Prospectus for Matriculation Subject Requirements.

### Can I use the change of mind option for University of Galway's programmes?

The change of mind option does not apply to mature students applying through the CAO for University of Galway. 1 February 2023 is the

closing date for mature student applications. Once you have submitted your CAO application, a statement of your choices will be sent to you in early February. Only at this point may you add new choices to or delete choices from your application, if desired. Once you resubmit your confirmation of choices, you can only reorder existing choices up until offers are made in early July. This means you should put your most preferred choice of course at the top of the list, then your second choice, and so on. In accordance with CAO procedures, applicants will only be offered their highest successful preference so it is important that you fill out your CAO choices in order of genuine preference.

### When will I know if my application has been successful?

If you are offered a place at University of Galway you will receive official notification of this from the CAO, usually in early July. The date by which you must accept your offer will be clearly stated on the CAO notification. If CAO applicants do not accept their offer by the stated date, then the place is recalled to be offered to another applicant (2nd round offers). It is essential that you are aware of the date for accepting your offer. You may accept your offer online ([www.cao.ie](http://www.cao.ie)) in the event that you are away from your address.

**Your responsibility...** If you change your address any time between February and the end of June you need to update to the correct address.

# Points Converter

## *Leaving Certificate Points Converter Pre-2017*

Current (Pre-2017) Leaving Certificate Grading Scale	New Leaving Certificate Grading Scale	New Points at Higher Level	New Points at Ordinary Level
A1	H1 / O1	100	56
A2	H2 / O2	88	46
B1			
B2	H3 / O3	77	37
B3			
C1	H4 / O4	66	28
C2			
C3	H5 / O5	56	20
D1			
D2	H6 / O6	46	12
D3			
E		33	0

## *Leaving Certificate Points Converter Pre-1992*

Pre-1992 LC Grade	New Grades	Current Points Awarded at Higher Level	Current Points Awarded at Ordinary Level	New LC Grade Equivalent	New Points Awarded at Higher Level	New Points Awarded at Ordinary Level
A	85 - 100	95	55	H1 / O1	100	56
B	70 < 85	80	40	H3 / O3	77	37
C	55 < 70	65	25	H4 / O4	66	28
D	40 < 55	50	10	H6 / O6	46	12
E	25 < 40	0	0		33	0
F	10 < 25					
NG	< 10					





# Important *Dates* for Mature Applications

## October 2022

University of Galway's Open Days  
*7 and 8 October*

## November 2022

CAO online application facility opens.  
MSAP/HPAT registration opens.  
*5 November 2022*

## January 2023

Mature Students Public Information Evening  
*11th January 2023 (See website for updates)*

CAO online discounted application fee ends this date  
*20 January 2023, 5.15pm*

## February 2023

Normal closing date for applications  
*1 February, 5.15pm*

Online facility to amend course choices becomes available  
*5 February*

HPAT test date  
*Exact Date TBC*

## March 2023

Closing date for amending course choices  
*1 March 2023, 5.15pm*

Latest date for HEAR/DARE supporting documentation to arrive in CAO. Applicable only to Leaving Certificate Students.  
*15 March 2023*

## University of Galway's Spring Open Day

<http://www.universityofgalway.ie/opendays/>

## July 2023

Round A offers for Mature  
*Early July 2023*

## August 2023

Round 0 offers for certain nonstandard categories of applicant, including QQI FETAC applicants.  
*Early August 2023*

Return to Learning Programme  
*Late August*

## September 2023

HEIs begin registration and orientation  
*Early September*

Exam	HPAT (for medicine applicants)	MSAP (for mature applicants to Arts)
Apply	See <a href="http://hpat-ireland.acer.org/">hpat-ireland.acer.org/</a>	msap-ireland@acer.org €102
	See <a href="http://hpat-ireland.acer.org/">hpat-ireland.acer.org/</a>	
Late applications	See <a href="http://hpat-ireland.acer.org/">hpat-ireland.acer.org/</a>	See msap-ireland@acer.org
Test day	TBC	TBC

# Useful Contacts

While some staff may continue to work remotely, please email to make an appointment and check our website for the latest guidelines around in person meetings.

## Mature Students

University of Galway Access Centre Áras Uí Chathail

[www.universityofgalway.ie/mature](http://www.universityofgalway.ie/mature)  
[maturestudents@universityofgalway.ie](mailto:maturestudents@universityofgalway.ie)

## Access Programmes

University of Galway Access Centre

[www.nuigalway.ie/access](http://www.nuigalway.ie/access)  
[access@universityofgalway.ie](mailto:access@universityofgalway.ie)

## Disability Support Service

University of Galway Access Centre

[www.nuigalway.ie/disability](http://www.nuigalway.ie/disability)  
[disabilityservice@universityofgalway.ie](mailto:disabilityservice@universityofgalway.ie)

## Traveller Education Officer

University of Galway Access Centre Áras Uí Chathail [access@universityofgalway.ie](mailto:access@universityofgalway.ie)

## Adult Learning and Professional Development

Nuns' Island, University of Galway

**T** + 353 91 494 066  
[adultlearning@universityofgalway.ie](mailto:adultlearning@universityofgalway.ie)

## Main University of Galway Switchboard

**T** +353 91 524 411 **F** +353 91 494521

[www.universityofgalway.ie](http://www.universityofgalway.ie)

## Student Information Desk (General Student Enquiries)

Áras Uí Chathail University of Galway

**T** +353 91 495 999  
<https://www.universityofgalway.ie/student-registry-helpdesk/>  
[askregistry@universityofgalway.ie](mailto:askregistry@universityofgalway.ie)

## Admissions Office – Undergraduate (EU Applicants)

Áras Uí Chathail University of Galway

**T** +353 91 492 401 **T** +353 91 494 024

**T** +353 91 493 878

[www.nuigalway.ie/admissions](http://www.nuigalway.ie/admissions)

[admissions@universityofgalway.ie](mailto:admissions@universityofgalway.ie)

## Fees Office

Áras Uí Chathail University of Galway

**T** +353 91 492 386 **F** +353 91 495 553

[fees@universityofgalway.ie](mailto:fees@universityofgalway.ie)

## Accommodation and Welfare Office

Áras Uí Chathail University of Galway

**T** +353 91 492 760/492 364

[teresa.kelly@universityofgalway.ie](mailto:teresa.kelly@universityofgalway.ie)

**T** +353 91 492 760/493 540

[angela.walsh@universityofgalway.ie](mailto:angela.walsh@universityofgalway.ie)

**T** +353 91 495 282

[una.mcdermott@universityofgalway.ie](mailto:una.mcdermott@universityofgalway.ie)

## International Affairs Office – (Non-EU Applicants) University of Galway

**T** +353 91 495 277

[www.nuigalway.ie/international](http://www.nuigalway.ie/international)

[international@universityofgalway.ie](mailto:international@universityofgalway.ie)

## Sports Scholarships University of Galway

**T** +353 91 493 475

[www.nuigalway.ie/sports](http://www.nuigalway.ie/sports)

[michael.heskin@universityofgalway.ie](mailto:michael.heskin@universityofgalway.ie)

For all other entrance scholarships, contact the Admissions Office at [www.universityofgalway.ie/admissions/ scholarships](http://www.universityofgalway.ie/admissions/scholarships)

Access Centre Áras Uí Chathail University of Galway [www.universityofgalway.ie/accesscentre](http://www.universityofgalway.ie/accesscentre)

The University of Galway Access Centre provides support for students participating on access programmes, students with disabilities and mature students.





## Other useful contacts

### National University of Ireland (NUI)

49 Merrion Square Dublin 2

**T** +353 1 439 2424

[www.nui.ie](http://www.nui.ie)

### Central Applications Office (CAO)

Tower House Eglinton Street Galway

**T** +353 91 509 800

[www.cao.ie](http://www.cao.ie)

[info@cao.ie](mailto:info@cao.ie)

*The contents of the Mature Students Guide are for information purposes only and shall not be deemed to constitute a contract between University of Galway and an applicant or any third party. While every effort is made to ensure the accuracy of the information in this publication, the University reserves the right to amend, change or delete any courses, syllabuses, examinations, fees, regulations, rules or orders at any time without notice*







OLLSCOIL NA GAILLIMHÉ  
UNIVERSITY OF GALWAY

**Connect with University of Galway**



**Connect with University of Galway Access Centre**

- [facebook.com/UniOfGalwayAccess](https://facebook.com/UniOfGalwayAccess)
- [instagram.com/uniofgalwayaccess](https://instagram.com/uniofgalwayaccess)
- [twitter.com/GalwayAccess](https://twitter.com/GalwayAccess)
- [linkedin.com/company/uni-of-galway-access-centre](https://linkedin.com/company/uni-of-galway-access-centre)